

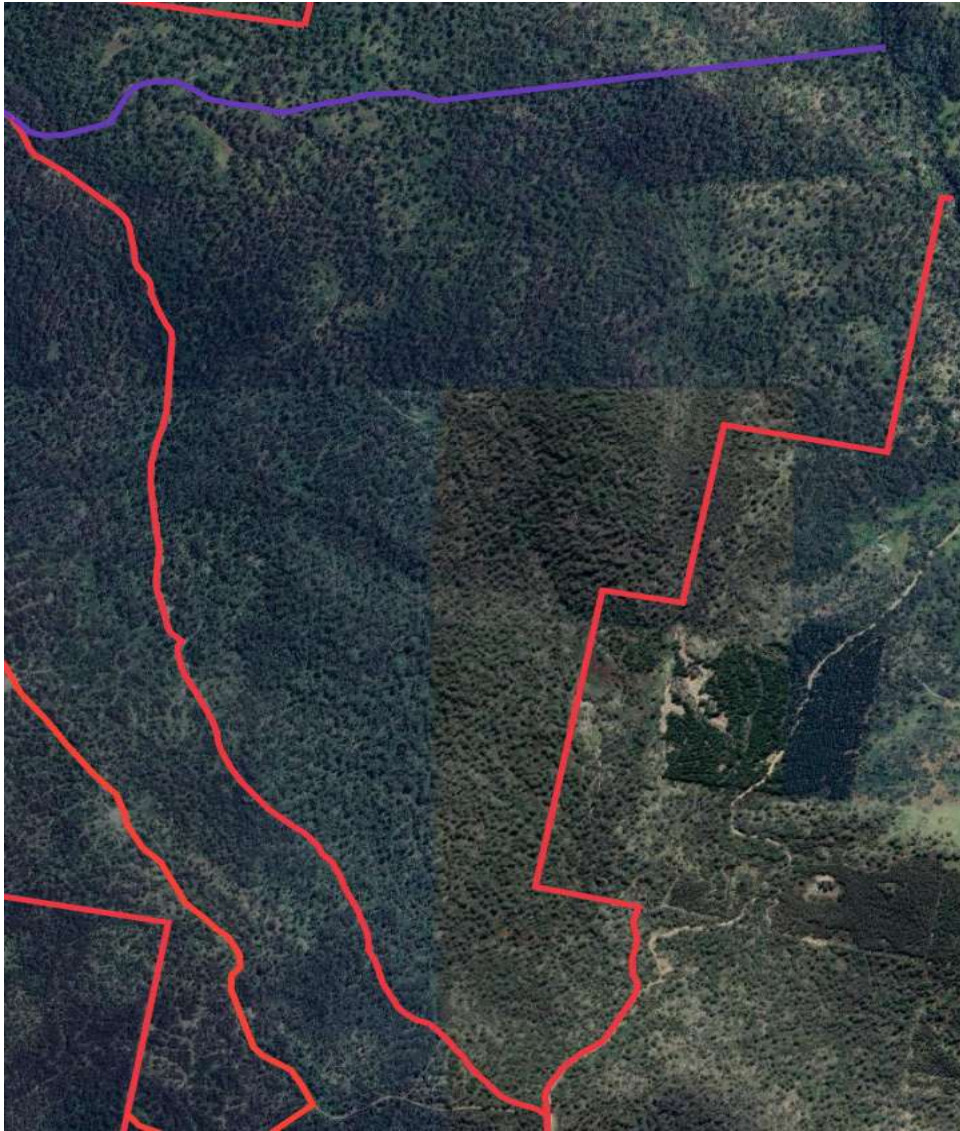


Block 1 has been reduced and the hatched area is not longer accessible. Access is prohibited. The area within the purple line ( road) and orange line is the extent of block 1.

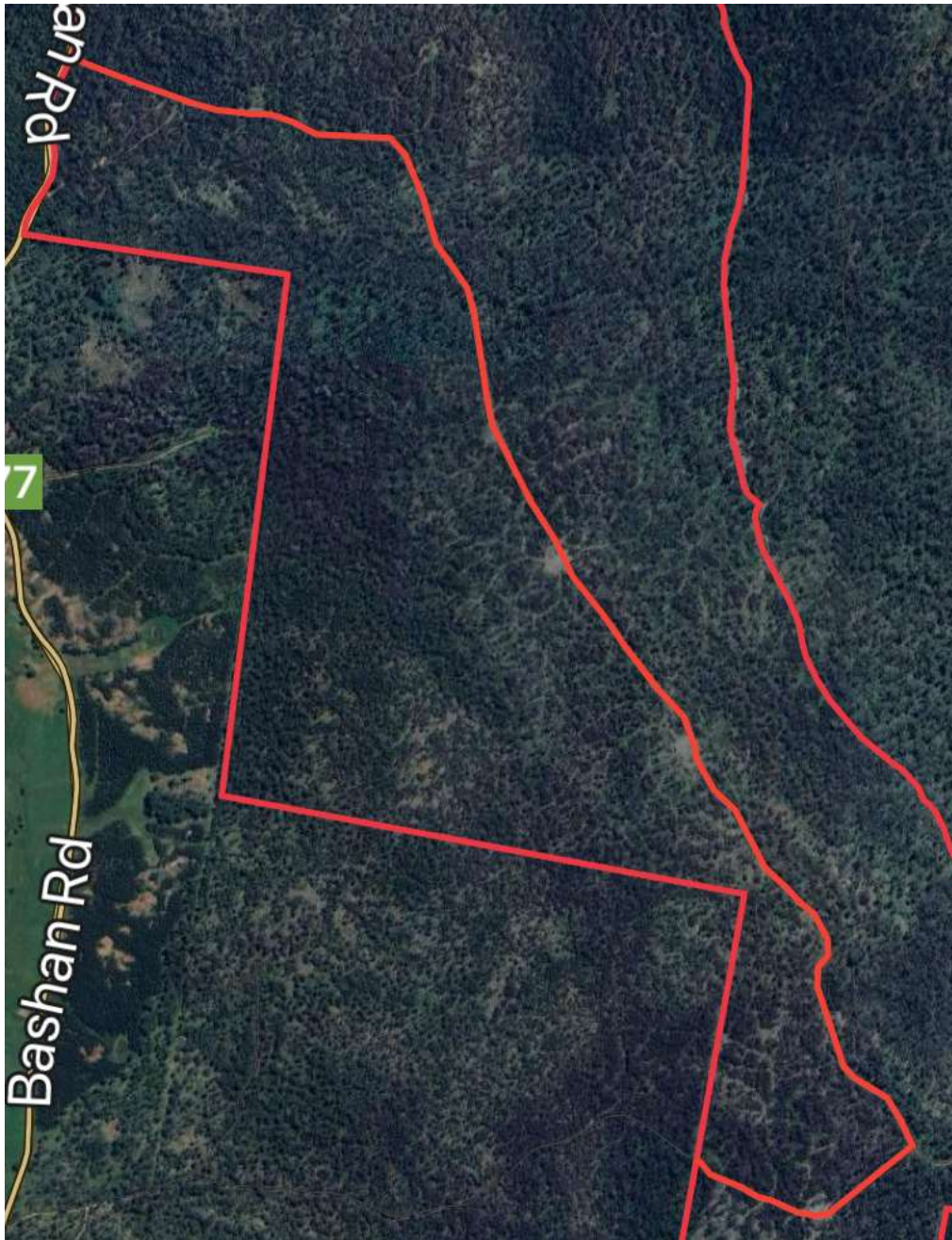


Native Tier block 2 – roads are boundaries and within the are that looks like a leg and boot.





Native Tier block 3 – Logging operations has been undertaken in this area over summer. Hunters are to avoid and ongoing operations and or machinery in this area.



Mative tier block 5 – there is not block 4. Access vis first boomgate off Bashan road and the area is south of the road that heads through the tier. Note the point where road goes into block 2.